

1. Indicator and bar of Super Freeze mode
2. Indicator and bar of Super Cool mode
3. Adjustment indicators and bars of freezer. The active setting value will be illuminated. All bars from minimum up to the relative setting value will be illuminated.
4. Adjustment indicators and bars of cooler. The active setting value will be illuminated. All bars from minimum up to the relative setting value will be illuminated.
5. It enables the setting value of freezer to be modified and Super Freeze mode to be activated if desired. Freezer may be set to -16, -18, -20, -22, -24 °C.
6. It enables the setting value of cooler to be modified and Super Cool mode to be activated if desired. Cooler may be set to +2, +4, +5, +6, +8 °C.
7. It activates Drink Cool mode. The expression will be illuminated when it is active.
8. It activates holiday mode. The expression will be illuminated when it is active.
9. It activates economical mode. The expression will be illuminated when it is active.
10. Alarm and SR will light red and audible alarm will be released when any problem occurs in the fridge. Audible alarm will be deactivated when pressed on alarm button. Red warning lights will continue to light up until the problem is corrected/eliminated.
11. In case the mains voltage is low, Alarm and LV will light red and audible alarm is released. Audible alarm will be deactivated when pressed on alarm button. Red warning lights will go off when mains voltage raises the appropriate level.

VESTEL WHITE GOODS	NF COMBI 3663-ELECTRONIC-ICE	CUSTOMER SUPPORT
	Display and control panel	

Super Freeze Mode

When would it be used?

- For freezing a large amount of food (too large to be fitted in the Super freezer).
- To freeze fast food.
- To freeze food quickly.
- To store seasonal food for a long time.

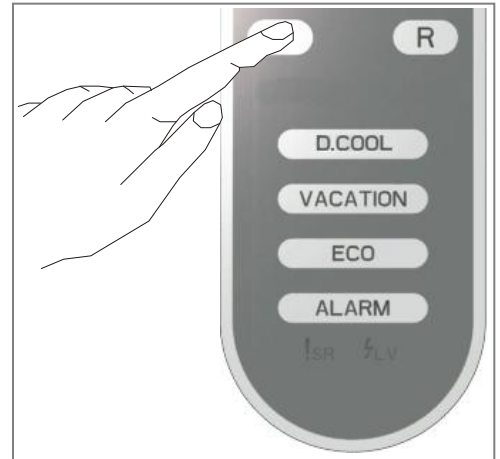
How would it be used?

- Press button F until letters "SF" and relative bar graphic light up.
- If pressed on no button in 1 second, SF and bar graphics will flash 3 times and a beep sound will be released.
- SF and relative bar graphics will be displayed during this mode.

During this mode:

- Maximum amount of fresh food (in kg) that can be frozen in 24 hours is indicated on the appliance label.
- For optimum appliance performance to reach maximum freezing capacity, set active SF mode 3 hours before placing fresh food in the freezer.
- 3 hours after being activated, your refrigerator starts giving signals. This signal tells that the quick freezer compartment is ready for the foods to be placed in it. Your refrigerator will give intermittent beep sounds for 1 minute in every 5 minutes; provided that the doors are not opened, this signal giving will last 1 hour. When this sound is heard, foods to be frozen must be placed away from the already frozen ones. When the door of the freezer or cooler is opened, this signal stops. When your foods are cooled enough, your refrigerator will automatically go out of the quick freezing mode.
- After a period of maximum 24 hours after the function is activated, the freezing process will be completed.
- Freezer may be adjusted, Super Freeze will be cancelled and the selected setting values will proceed.
- Temperature of super cool and cooler may be adjusted. In this case, super freeze mode continues.
- Economical and Holiday modes can be selected. Super Freeze Mode will be cancelled and the selected mode is enabled.
- When "Super Freeze" is active, SF can be re-selected and cancelled by pressing on button F.

Note: "Super Freeze" mode will be automatically cancelled after 24 hours or freezer sensor temperature is lower than -32 °C.



VESTEL WHITE GOODS	NF COMBI 3663-ELECTRONIC-ICE	CUSTOMER SUPPORT
	Display and control panel	

Super Cool Mode

When would it be used?

- To cool fast food before eating.
- To cool and store and lots of food.
- To cool drinks quickly.

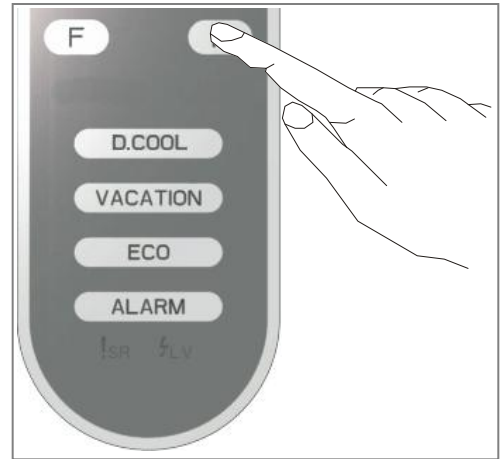
How would it be used?

- Press button R until letters "SC" and relative bar graphic light up.
- If pressed on no button in 1 second, SC and bar graphics will flash 3 times and a beep sound will be released.
- SC and relative bar graphics will be displayed during this mode.
- When you use super cool mode, existing fresh food in refrigerator compartment can reach to much more cooling for a brief period. After this mode, the fresh food will turn back to normal temperature.
- And if needed you can use this mode again.

During this mode:

- Cooler may be adjusted, Super Cool will be cancelled and the selected setting values will proceed.
- Temperature of super freeze and freezer may be adjusted. In this case, super cool mode continues.
- Economical and Holiday modes can be selected. Super Cool Mode will be cancelled and the selected mode is enabled.
- When "Super Cool" is active, SC can be re-selected and cancelled by pressing on button R.

Note: "Super Cool" mode will be automatically cancelled after 12 hours or cooler sensor temperature is lower than 0°C.



Economy Mode

Freezer and Cooler operate in the economical conditions that are determined in the control unit.

When would it be used?

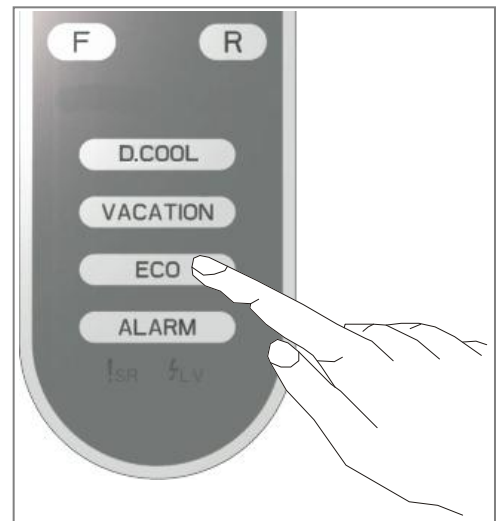
- When you want your fridge to operate economically.

How would it be used?

- Touch button ECO.
- ECO will start flashing
- If pressed on no button in 1 second, the symbol will flash 3 times and a beep sound will be released.
- When this mode is active, ECO symbol stays on.
- -18 and relative graphic bar will be displayed on Freezer
- +4 and relative graphic bar will be displayed on Cooler

During this mode:

- Freezer may be adjusted, Economical Mode will be cancelled and the selected setting values will proceed.
- Cooler may be adjusted, Economical Mode will be cancelled and the selected setting values will proceed.
- Super Cool and Super Freeze modes can be selected, Economical mode is automatically cancelled and the selected mode is activated.
- Holiday mode can be selected. Economical mode is automatically cancelled and the selected mode is activated.
- To cancel, you will just need to press on button ECO.



VESTEL WHITE GOODS	NF COMBI 3663-ELECTRONIC-ICE	CUSTOMER SUPPORT
	Display and control panel	

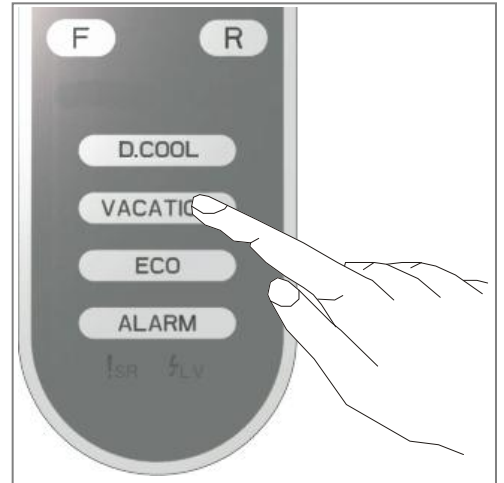
Holiday Mode

When would it be used?

- If you are going to a long vacation, and want to empty the cooler , you can use this mode.

How would it be used?

- Touch button VACATION.
- VACATION will start flashing.
- If pressed on no button in 1 second, the symbol will flash 3 times and a beep sound will be released.
- When this mode is active, VACATION symbol stays on.
- Indicators and bar graphics of freezer and cooler will be off
- No adjustment can be carried out without cancelling Holiday Mode.
- To cancel, you will just need to press on button VACATION.
- Your fridge will continue to operate in the previous setting values.



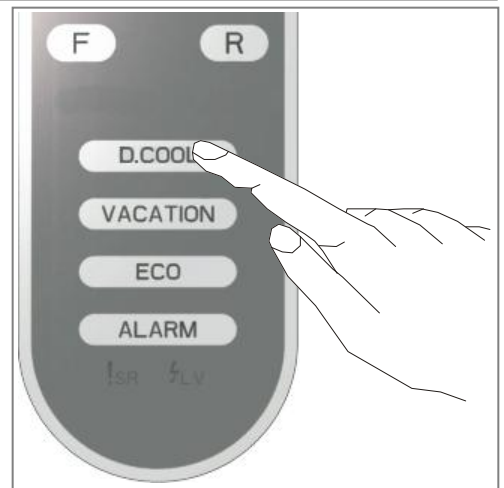
Drink Cool Mode

When would it be used?

- This mode is used to cool the drinks within adjustable time.

How to use?

- Press DCOOL button.
- Press DCOOL button to adjust the time
- 05 minutes -> 1. bars;
- 10 minutes -> 2. bars;
- 15 minutes -> 3. bars;
- 20 minutes -> 4. bars;
- 25 minutes -> 5. bars;
- 30 minutes -> 6. bars are lighting;
- When you select the time the numbers will blink 3 times on screen and sound beep beep.
- If no button is pressed within 2 seconds the time will be set.
- The countdown starts from the adjusted time every 5 minutes , 1 bar will disappear.
- At the end of adjusted time , display will give visual and voice alarm.
- To cancel this mode press D.COOL set button.



Note : You must adjust the time according the temperature of bottles before you put in .

- For example, at beginning you can adjust to "5 min". After this period if this cooling is not sufficient, you will can again 5 or 10 or etc minute.
- When you use this mode, you must check temperature of bottles regularly. And the temperature of bottles will reach to sufficient level, you must remove these bottles from your appliance.
- If you forget the bottles in quick drink, can explode.

VESTEL WHITE GOODS	NF COMBI 3663-ELECTRONIC-ICE	CUSTOMER SUPPORT
	Display and control panel	

Function of Child Lock

When would it be used?

- To prevent children from playing with the buttons and changing the settings you have made, child lock is available in the appliance.

Activating Child Lock

- Press on Freezer (F) and Cooler (R) buttons simultaneously for 5 seconds.

Deactivating Child Lock

- Press on Freezer (F) and Cooler (R) buttons simultaneously for 5 seconds.

Note: Child lock will also be deactivated if electricity is interrupted or the fridge is unplugged.

Light Cancelling Mode

When would it be used?

- If you want to cancel lights of cooler, you can select this mode.
- Press on Freezer (F) and Cooler (R) buttons simultaneously, and open and close the cooler door 3 times. The mode will be selected in this way. From now on, the lights will not come on when freezer and cooler doors are opened.
- If you want to cancel this mode, repeat the same process or the mode will automatically cancel itself after 24 hours.

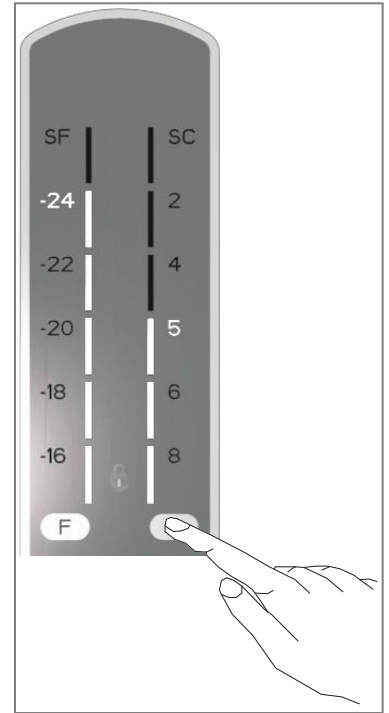
Screen Saver Mode

- This mode can be selected for energy saving.
- Press D.COOL button for 3 seconds continuously.
- After 3 seconds, the mode will be set and sound as beep beep.
- During screen saver mode, the lighting of display will be off.
- When we open door or press any button, the lighting of display will be on for 5 seconds, then it will be off again.
- Press D.COOL button for 3 seconds for cancelling this mode.

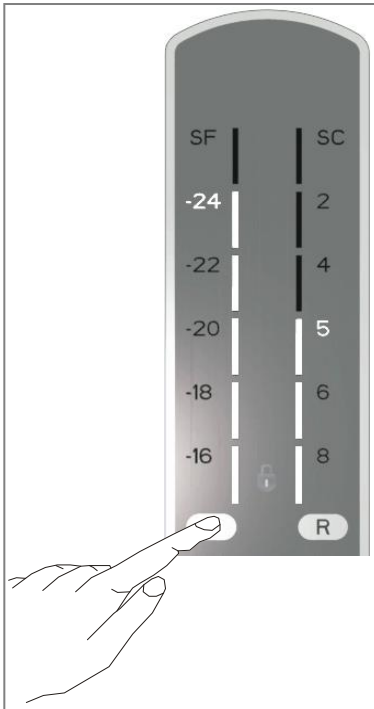
VESTEL WHITE GOODS	NF COMBI 3663-ELECTRONIC-ICE	CUSTOMER SUPPORT
	Display and control panel	

Cooler Temperature Settings

- Initial temperature value for the Cooler Indicator is +4°C.
- Press cooler (R) button once.
- When you first push this button, +2°C appears on the setting indicator of the cooler.
- Whenever you press on this button, one bar comes on cooler bar graphic indicator and lower temperature will be set. (+8°C, +6°C, 5°C, +4°C, +2°C)
- When you push the cooler button until +2°C (maximum cold) appears on the cooler setting indicator, and when you keep pushing, letters SC (Super Cool) will flash.
- If you continue to press, it will restart from +8°C.
- The temperature value selected before Holiday Mode, Super Freeze Mode, Super Cool Mode or Economical Mode is activated will remain the same when the mode is over or cancelled. The appliance continues to operate with this temperature value.

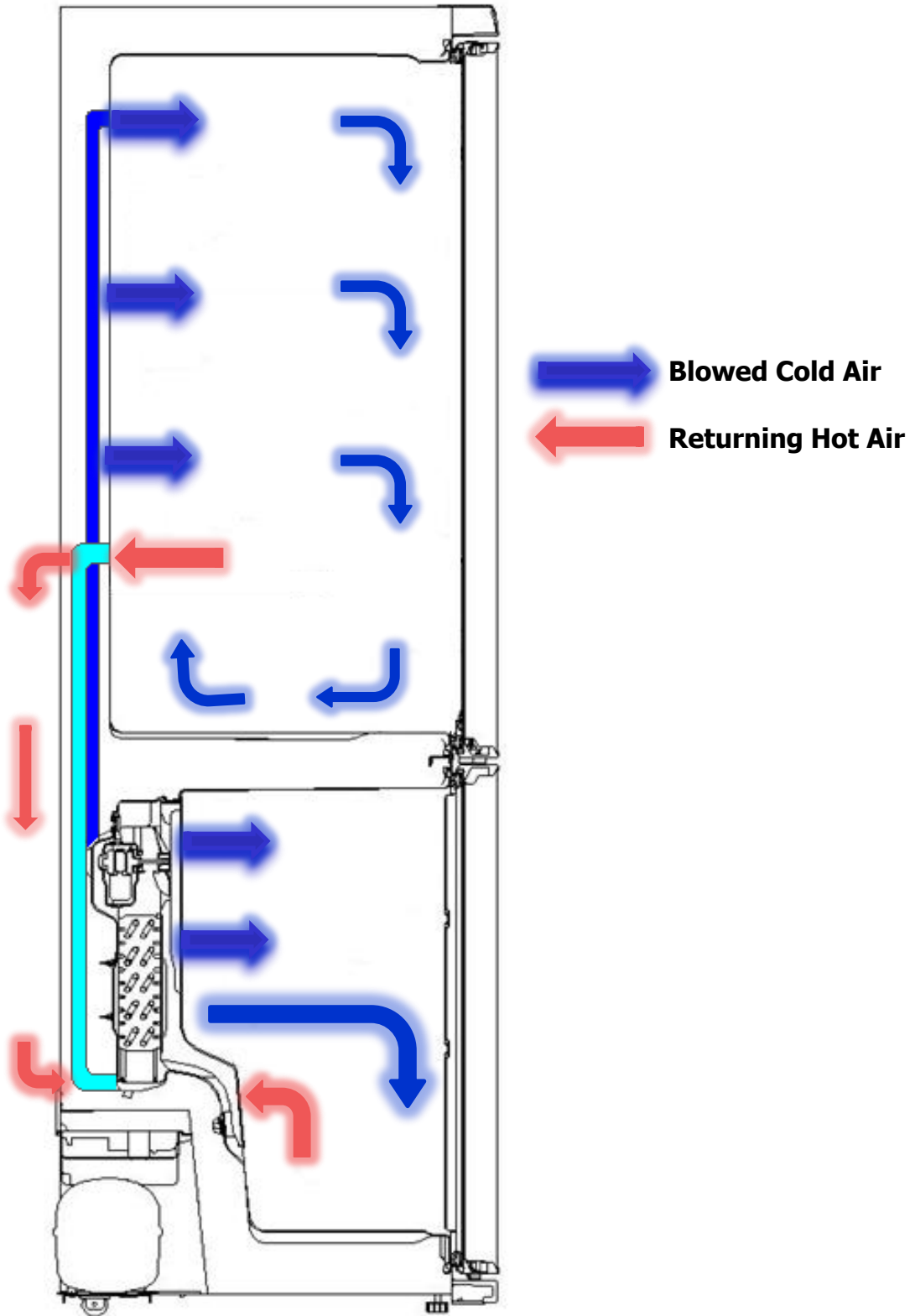


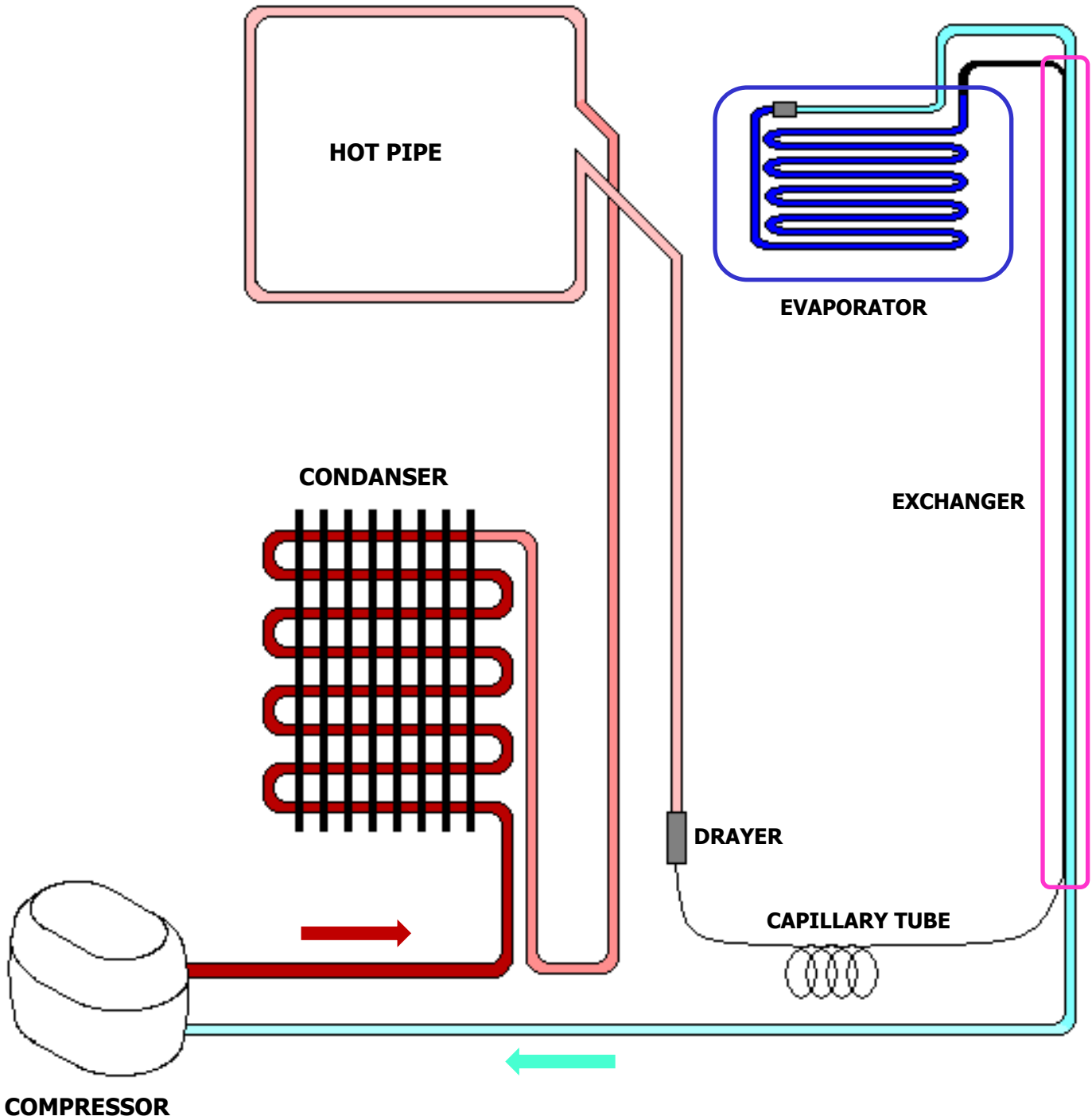
Freezer Temperature Settings



- Initial temperature value for Freezer Setting Indicator is -18°C.
- Press freezer (F) button once.
- When you first push this button, -20°C appears on the setting indicator of the freezer.
- Whenever you press on this button, one bar comes on Freezer Bar Graphic Indicator and lower temperature will be set. (-16°C, -18°C, -20°C, -22°C, -24°C)
- When you push the freezer button until -24°C (maximum cold) appears on the Freezer Setting Indicator, and when you keep pushing, letters SF (Super Freeze) will flash.
- If you continue to press, it will restart from -16°C.
- The temperature value selected before Holiday Mode, Super Freeze Mode, Super Cool Mode or Economical Mode is activated will remain the same when the mode is over or cancelled. Your appliance will continue operating in this temperature value selected.

VESTEL WHITE GOODS	NF COMBI 3663-ELECTRONIC-ICE	CUSTOMER SUPPORT
	FLOW OF AIR	





VESTEL WHITE GOODS	NF COMBI 3663-ELECTRONIC-ICE	CUSTOMER SUPPORT
	SPECIAL PROGRAMS	

When you first start the appliance

If the freezer and defrost sensors are warmer than -5°C , then the automatic test starts. The below listed components will be tested respectively with 5 second intervals.

- Middle sheet resistance for 5 seconds
- Defrost heaters for 5 seconds (Fin evaporator resistance, defrost pipe resistance and insulation mullion heater)
- Evaporator fan motor for 5 seconds
- Compressor for 5 seconds

After 5 seconds, the appliance will start to run.

Display temperature

FREEZER

-16 C	1 Bar
-18 C	2 Bar
-20 C	3 Bar
-22 C	4 Bar
-24 C	5 Bar

REFRIGERATOR

+2 C	4 Bar
+4 C	3 Bar
+6 C	2 Bar
+8 C	1 Bar

VESTEL WHITE GOODS	NF COMBI 3663-ELECTRONIC-ICE	CUSTOMER SUPPORT
	SPECIAL PROGRAMS	

Defrost algorithm

Defrosting activates after 48 hours of total running time of refrigerator or 18 hours of total compressor running time. Up to below mentioned reasons running times might decrease to 12 hours for refrigerator or 14 hours for compressor.

- Amount of ice formed,
- Number of times the door is opened and closed,
- Duration the door remained opened,
- Sudden usage change ,
- Sudden Cooler Compartment temperature increase,
- Sudden Freeze Compartment temperature increase,

Defrosting time

Under normal conditions, defrosting period ends when the defrost sensor measures 8°C. But if the defrosting period exceeds 37 minutes, then the defrosting mode completion temperature will be risen to 12°C.

Delay of the compressor run

Compressor will be started after 5 minutes of defrost mode.

Delay of fan motor run

Fan motor starts after 3 minutes of compressor run.

Low Voltage Program

In case of supply voltage lower than 170 V for more than 5 seconds, the low voltage program will stop the compressor, evaporator fan motor, condenser fan motor and also the super freezing super cooling functions. If this situation happens during the defrost mode, then the appliance will stop during defrosting.

When the supply voltage reaches a value greater than 180V, the appliance will start again from the defrost mode.

If the appliance was not stopped during the defrost mode, then will be stopped for minutes more for compressor secure start-up and will be started from the last setted program.

When the electricity is off

- All the parameters and functions will be kept in the memory (except the child lock function)
- When the electricity is on if the defrost sensor measures <5°C then the compressor will be started after 5 minutes. If the defrost sensor measures >5°C, then the compressor will be started immediately.
- The appliance will be started with the last program setted.

Other Features

- **Door open alarm** : It will be activated. If freezer or refrigerator door is open more than 2 minutes continuously.
- **Crisper and suction resistance**: It is activated when the ambient temperature is below 13°C to run as a summer-winter key.

VESTEL WHITE GOODS	NF COMBI 3663-ELECTRONIC-ICE	CUSTOMER SUPPORT
	SERVICE MODE	

Push FRE button continuously. During this time, open and close freezer door for 3 times.
Appliance will enter service mode 3 sec. later.

During service mode:

- Buzzer will sound beep for 0.1 sec. each 5 sec. during service mode.
- Bars will show error codes (service mode reaction). Symbols will be OFF.
Only SR symbol will blink during Service Mode
- If there is no error , bars will show nothing except of SR symbol
- And if error is disabled during service mode, error codes will be disabled in bars.
- If service man pushes Drink Cool button he will be able to choose functions listed below. Bar segments will not show errors as functions are working.
Functions will be set if service man does not push any other button for 1 sec.
- Service man has 4 functions to select. First 4 push of Drink Cool button will activate symbols. Service man will cancel mode selection if he stops pushing button on the 5th push.

1. Push Starting program

Economy symbol in display will blink during mode.

Freezer bars will light as components are checked.

1 bar will light when Middle Bracket heater is ON.(-16 bar)

2 bars will light when defrost heater is ON.(-16 and -18 bars)

3 bars will light when evap fan motor is ON.(-16 , -18 and -20 bars)

4 bars will light when fan motor is ON.(-16 , -18 , -20 and -22 bars)

As starting program finishes, first symbol will be OFF. Appliance will return to initial service mode reaction.

2. Push Forced defrost and forced canceling of defrost

Holiday symbol will blink during mode. Defrosting mode will start from

Step 3. Mode can be canceled manually or automatically.

Manual canceling will be done by pushing REF button. Holiday symbol will be OFF if defrost is canceled manually. Appliance will return to initial service mode reaction.

If manual canceling of this function is not performed in 30 min. service mode will be canceled. Appliance will check if defrost is finished in this 30min. If YES, appliance will go on from previous set values. But if defrost is not finished , appliance will go on defrost till it finishes and then go on from previous set values.

3. Push Forced opening and closing of damper motor

SF and its bars (only the upper bar on the left side) will blink during mode. As function is selected damper will be opened if it was closed; it will close if it was opened.

If service man does not reset the function, damper will return to initial condition (open or close) after 5 min. Appliance will return to initial service mode reaction

Manual canceling will be done by pushing REF button. Symbol will be OFF as damper motor return to initial condition. Appliance will return to initial service mode reaction.

VESTEL WHITE GOODS	NF COMBI 3663-ELECTRONIC-ICE	CUSTOMER SUPPORT
	SERVICE MODE	

4. Push Displaying actual temperatures in compartments

SC and its bars (only the uppermost bar on the right side) will blink during this mode.

Freezer and cooler bars will be ON according to freezer sensor values' specification. Freezer icon blinks. Specification is given below.

If service man pushes FRE button;

Freezer and cooler bars will be ON according to cooler sensor values' specification. Cooler icon blinks. Specification is given below.

If service man pushes FRE button again;

Freezer and cooler bars will be ON according to defrost sensor values' specification. No icon blinks. Specification is given below.

Specification for above functions:

If sensor temp $< -40^{\circ}\text{C}$, -24 bar should be ON,

If $-40^{\circ}\text{C} \leq \text{sensor temp.} < -30^{\circ}\text{C}$, -22 bar should be ON,

If $-30^{\circ}\text{C} \leq \text{sensor temp.} < -20^{\circ}\text{C}$, -20 bar should be ON,

If $-20^{\circ}\text{C} \leq \text{sensor temp.} < -10^{\circ}\text{C}$, -18 bar should be ON,

If $-10^{\circ}\text{C} \leq \text{sensor temp.} < 0^{\circ}\text{C}$, -16 bar should be ON,

If $0^{\circ}\text{C} \leq \text{sensor temp.} < +10^{\circ}\text{C}$, +2 bar should be ON,

If $+10^{\circ}\text{C} \leq \text{sensor temp.} < +20^{\circ}\text{C}$, +4 bar should be ON,

If $+20^{\circ}\text{C} \leq \text{sensor temp.} < +30^{\circ}\text{C}$, +5 bar should be ON,

If $+30^{\circ}\text{C} \leq \text{sensor temp.} < +40^{\circ}\text{C}$, +6 bar should be ON,

If sensor temp $\geq +40^{\circ}\text{C}$, +8 bar should be ON,

If service man does not push FRE button in 5 min, mode will be canceled. Appliance will return to initial service mode reaction

If service man pushes REF button again, function will be canceled. Appliance will return to initial service mode reaction .

5. Push Empty. No function is set.

VESTEL WHITE GOODS	NF COMBI 3663-ELECTRONIC-ICE	CUSTOMER SUPPORT
	SERVICE MODE CONTROL FUNCTIONS	

Control functions can not be seen by customer. They can only be seen at service mode.

+6°C bar ON, Freezer sensor > -10 °C (Like -9°C, -10°C)

It means that freezer compartment is not cold enough. Some reasons for this failure are as written below;

- When you first switch on the appliance,
- When too much fresh food are placed in the freezer compartment,
- When the inlet cold air duct is covered by foods,
- When the Freezer door continuously open for long time,
- When the electricity is off for a long time of period.

+8°C bar ON Refrigerator sensor > 15 °C (Like 16°C, 17°C)

It means that although the temperature in the freezer section is colder than -10°C, the refrigerator compartment is not cold enough. Some of the reasons for this failure are as written below;

- When the duct damper couldn't open,
- When too much fresh food are placed in the refrigerator compartment,
- When the refrigerator door continuously open for long time
- When you first switch on the appliance,
- When the electricity is off for a long time of period.

-24°C bar ON , Refrigerator sensor < -5 °C (Like -6°C, -7°C)

It means that refrigerator compartment is too cold. (< -5 °C). Some of the reasons for this failure are as written below;

- When the duct damper couldn't close

+6°C bar ve +8°C bar ON Freezer Sensor > -10 °C and Ref. Sensor > 15 °C

You will see this failure when you first start and when the electricity is off for a long time of period. the appliance. It will be disappeared after the compartments reach to the temperatures below to the above mentioned temperatures.

VESTEL WHITE GOODS	NF COMBI 3663-ELECTRONIC-ICE	CUSTOMER SUPPORT
	SERVICE MODE CONTROL FUNCTIONS	

Control functions can not be seen by customer. They can only be seen at service mode.

Sensor Faults; FX

Freezer sensor:1

Refrigerator Sensor:2

Defrost Sensor:3

Ambient Sensor:4

-16°C bar ON , Freezer sensor is defected,(1),

-18°C bar ON , Refrigerator sensor is defected(2),

-20°C bar ON , Defrost sensor is defected (3),

-22°C bar ON , Ambient sensor is defected(4)

+2°C bar ON Insufficient cooling in the refrigerator section (No cooling for 10 minutes)

Some reasons of this fault are;

- connector defect
- wire contact is not good
- Refrigerant leakage
- Compressor defect
- Relay group defect

+4°C bar ON Defrost Fault

- During the defrosting period, if the defrost sensor still measures below 0°C after 90 minutes of defrosting, then this fault code will appear on the display panel. Some reasons of this fault are;
- connector defect
- wire contact is not good
- Defrost Heater defects,
- Too much ice accumulation on the evaporator.

VESTEL WHITE GOODS	NF COMBI 3663-ELECTRONIC-ICE	CUSTOMER SUPPORT
	USER AND SERVICE MODE ERROR MESSAGES	

DEFECT TYPE	MEANING	CAUSE	ACTIONS TO BE TAKEN
SR	Fault warnings	It appears when one or several parts of the fridge fail or a problem occurs on the cooling system.	Contact the nearest authorized technical service as soon as possible.
LV	Low voltage	Refrigerator switches to standby condition when the voltage supply is lower than 170 Volts.	This feature prevents damage to the compressor due to low voltage. Fridge will start operating automatically when the supply voltage reaches the desired level.

SENSOR	TEMPERATURE	USER MODE REACTION	SERVICE MODE REACTION
(1) Freezer	> +50 °C or <-50 °C (sensor is short or open)	Display SR & ALARM (blinks) icon Buzzer sounds If user pushes ALARM button, buzzer is closed But SR & ALARM blinks until defect is disappears.	-16°C bar ON
(2) Refrigerator	> +50 °C veya <-50 °C (sensor is short or open)		-18°C bar ON
(3) Defrost	Short (< 100 Ω) or <-50 °C		-20°C bar ON
(4) AT sensor	Short or < -30 °C		-22°C bar ON
Breakdown of (1) and (2)			-16°C and -18°C bars ON
Breakdown of (1) and (3)			-16°C and -20°C bars ON
Breakdown of (1) and (4)			-16°C and -22°C bars ON
Breakdown of (2) and (3)			-18°C and -20°C bars ON
Breakdown of (2) and (4)			-18°C and -22°C bars ON
Breakdown of (3) and (4)			-20°C and -22°C bars ON
Breakdown of (2) and (3) and (4)			-18°C,-20°C and -22°C bars ON
Breakdown of (1) and (3) and (4)			-16°C,-20°C and -22°C bars ON
Breakdown of (1) and (2) and (4)			-16°C,-18°C and -22°C barsON
Breakdown of (1) and (2) and (3)			-16°C,-18°C and -20°C bars ON
Breakdown of all sensors			-16°C, -18°C,-20°C and -22°C bars ON

VESTEL WHITE GOODS	NF COMBI 3663-ELECTRONIC-ICE	CUSTOMER SUPPORT
	USER AND SERVICE MODE ERROR MESSAGES	

Component defect on display

DEFECT TYPE	DETAILS	USER MODE REACTION	SERVICE MODE REACTION
Compressor Defect	Defrost sensor temp > -10°C (D sensor temp.unchanges for 10 min.continuous compressor run)	Display SR & ALARM (blinks) icon Buzzer sounds If user pushed ALARM button, buzzer is closed But SR & ALARM blinks until defect is disappears.	Display +2°C bar ON
Defrost Heater Defect	Defrost sensor < 0°C for 90 min		Display +4°C bar ON

Low voltage error on display

DEFECT TYPE	DETAILS	USER MODE REACTION	SERVICE MODE REACTION
Low voltage	Power supply < 170	LV & ALARM blinks Buzzer sounds If user pushes ALARM button, buzzer is closed	Display +2°C, +4°C, +6°C ve +8°C bars ON

Cooling error on display

NOTE:To prevent the wrong alarms, this alarm status is disabled on following conditions:

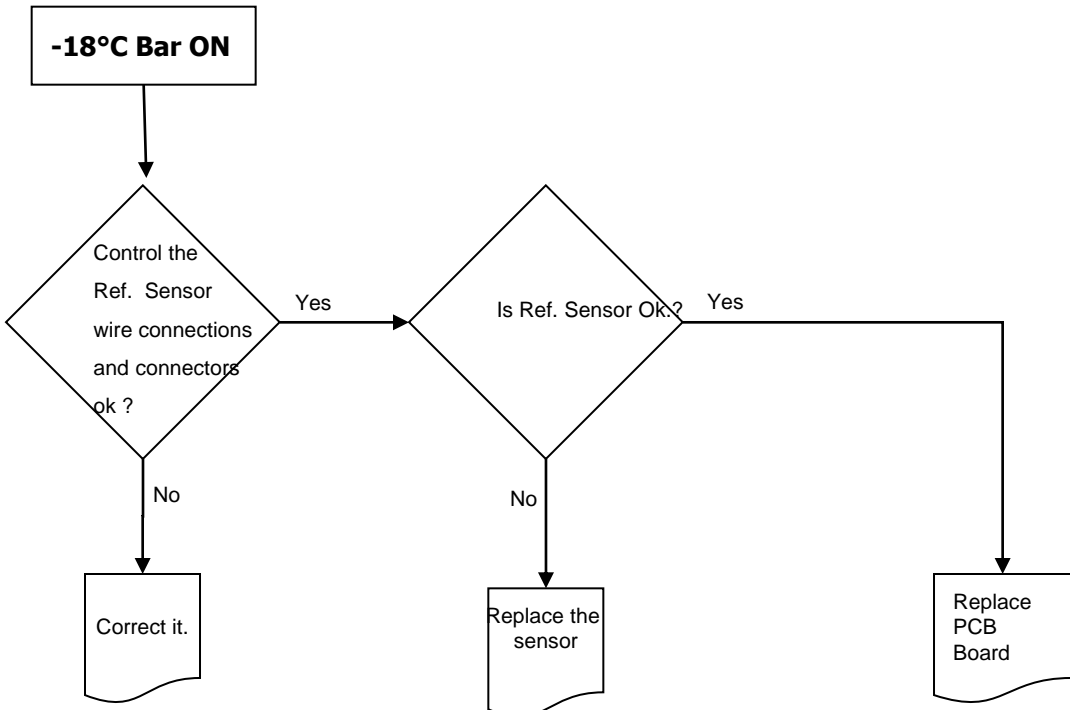
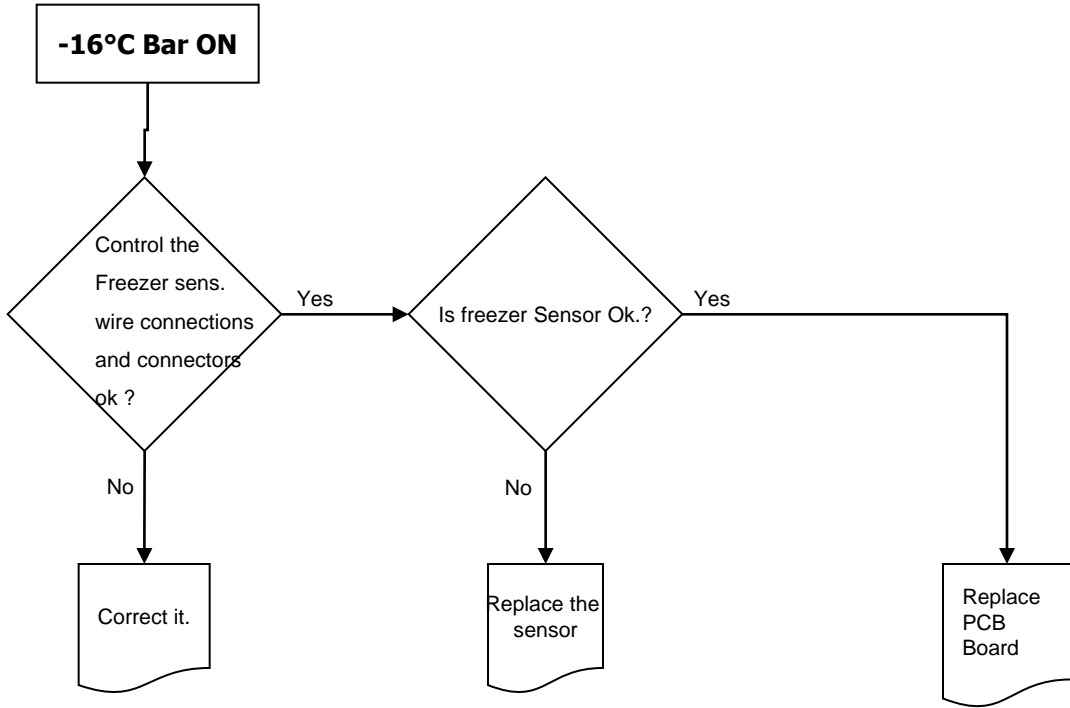
- During the first 6 hours after the product was firstly connected.
- During the defrost period
- During the first two hours after a defrost
- During the first 2 hours that one of the doors was open.

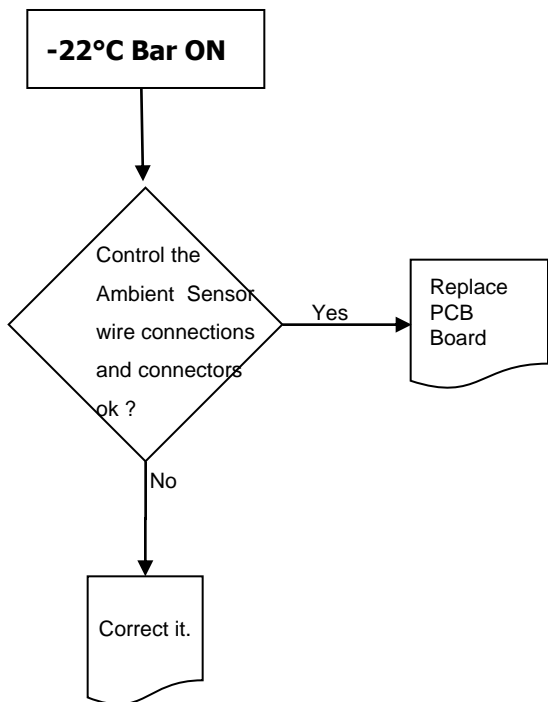
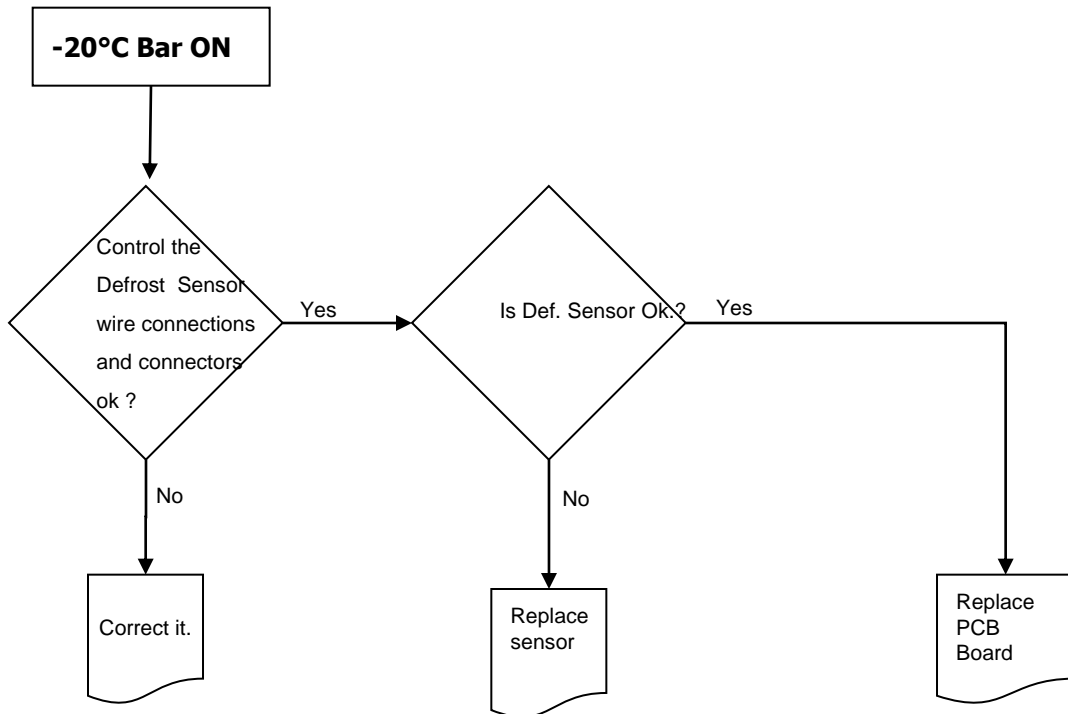
DEFECT TYPE	DETAILS	USER MODE REACTION	SERVICE MODE REACTION
Freezer sensor > -10°C	Freezer compartment is not cool enough	SR icon blinks Buzzer sounds If user pushed ALARM button, buzzer is closed But SR & ALARM blinks until defect is disappears.	+6°C bar ON
Ref. sensor > +10°C and if Holiday mode is not active	Refrigerator compartment is warm		+8°C bar ON
Ref. sensor < -5°C	Refrigerator compartment is so cool		-24°C bar ON

VESTEL WHITE GOODS	NF COMBI 3663-ELECTRONIC-ICE	CUSTOMER SUPPORT
	USER AND SERVICE MODE ERROR MESSAGES	

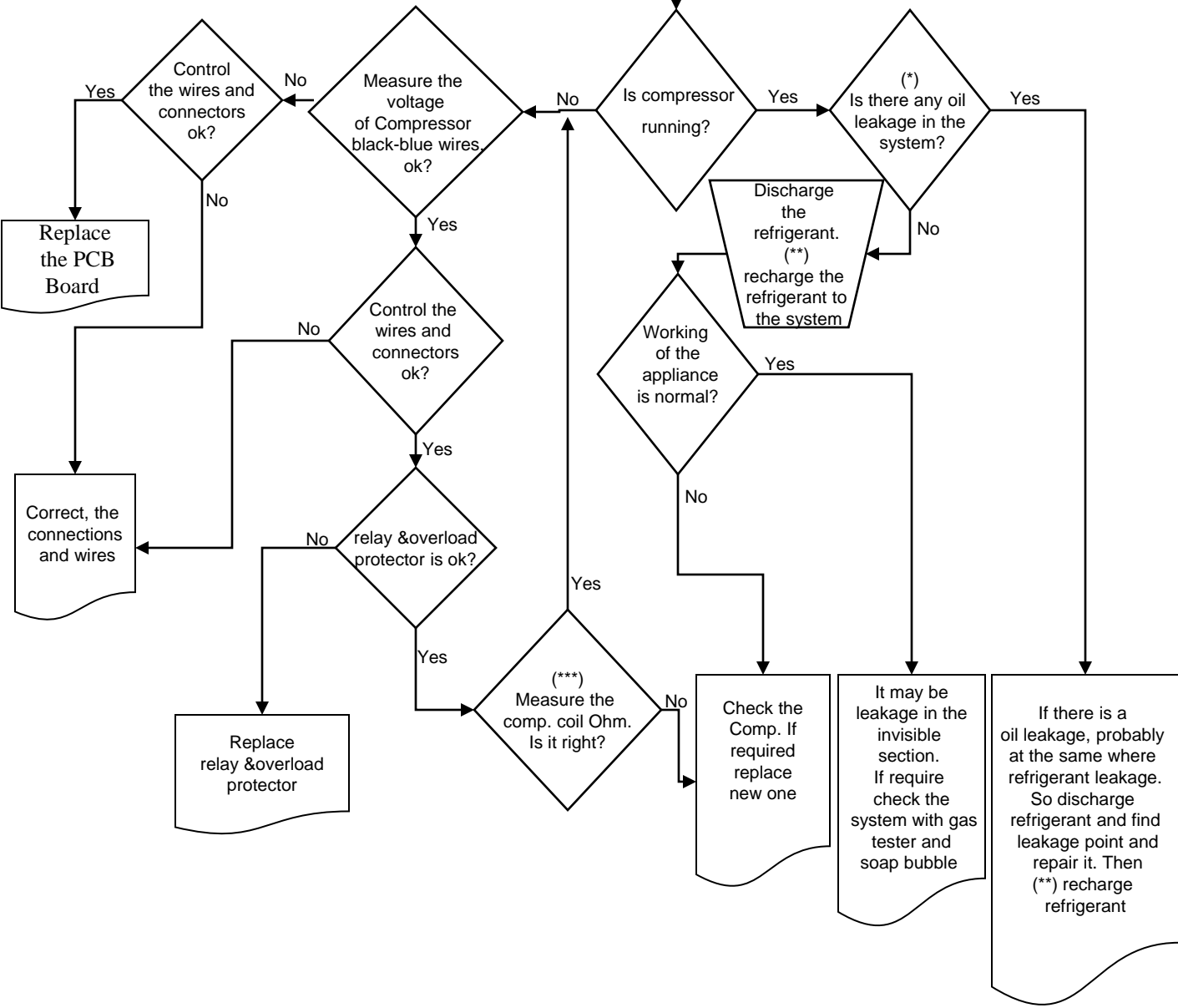
PRIORITY OF ERROR ON DISPLAY

	USER MODE REACTION	SERVICE MODE REACTION
Compressor Defect	SR	+2°C bar ON
Defrost Heater Defect		+4°C bar ON
Sensor Defect (Short-Open)		
F sensor > -10°C and R sensor > +10°C		+6°C and +8°C bars ON
F sensor > -1°C		+6°C bar ON
R sensor > 10°C		+8°C bar ON
R sensor < -5°C		-24°C bar ON





+2°C bar ON
Insufficient cooling



(*) Check all of the visible pipes and welding points against oil leakage
 (**) Before recharging the refrigerant to the system; Dryer must be replaced and at least 30 minutes vacuum must be done
 (***) Comp. Main coil and auxiliary coil are 10 Ω and 22 Ω respectively (At 25 °C ambient temp.)

1. Unscrew the screw fixing the top hinge cover and remove it. (Fig-1)



Figure-1

2. Disconnect the display connector. Unscrew the two screws fixing the top hinge and remove it. (Fig-2)



Figure-2

3. Remove the refrigerator door. (Fig-3)



Figure-3

4. Unscrew the two screws which are fixing the middle hinge. (Fig-4)



Figure-4

5. Remove the freezer door. (Fig-5)



Figure-5

6. Unscrew the bottom hinge fixing screws and remove it. (Fig-6)



Figure-6

7. Unscrew the stationary foot of bottom hinge and screw to **Hole-1**. Unscrew the hinge pin and screw to **Hole-2**.(Fig-7)

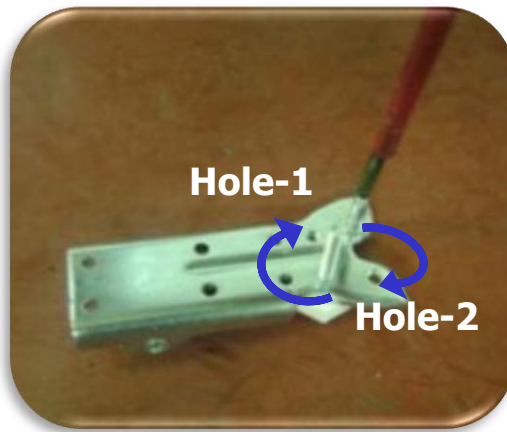


Figure-7

8. Unscrew the stationary foot and front wheel (Fig-8.1) and screw to the right side. (Fig-8.2)



Figure-8.1

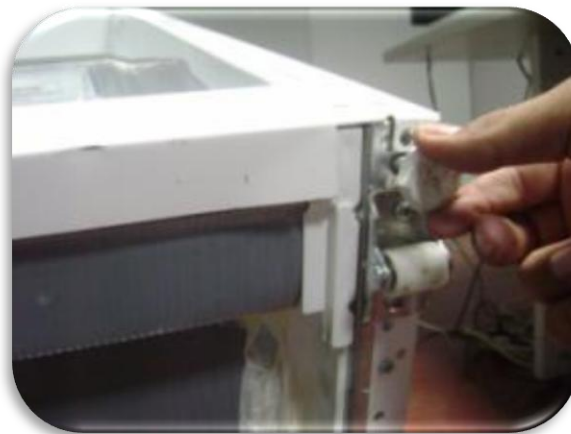


Figure-8.2

9. Unscrew the side panel support screw (Fig-9.1) and screw the bottom hinge to the left side . (Fig-9.2)

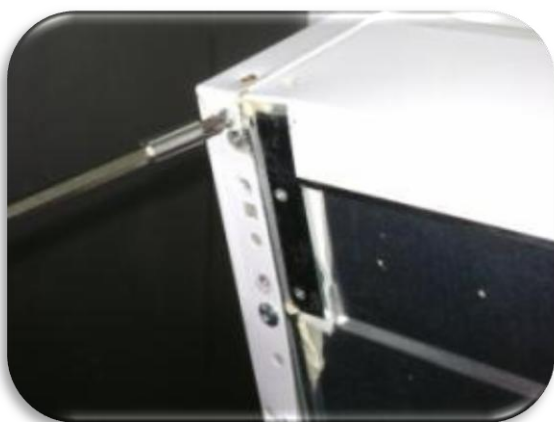


Figure-9.1



Figure-9.2

10. Remove the middle hinge cover on the left. (Fig-10.1) and insert the middle hinge cover to the right side. (Fig-10.2)



Figure-10.1



Figure-10.2

11. Replace the freezer door top bushing (Fig-11.1) and top bushing cap. (Fig-11.2)



Figure-11.1

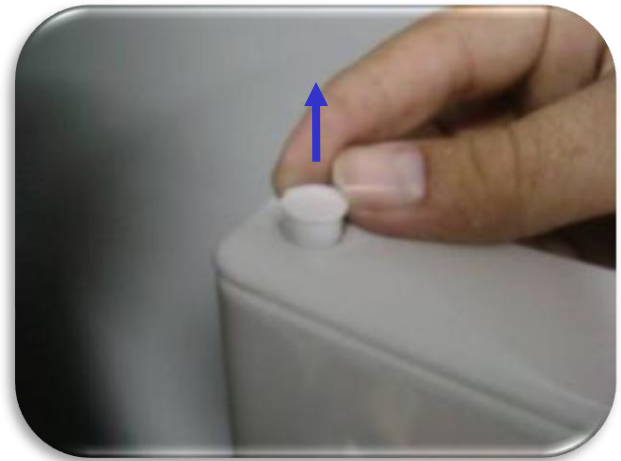


Figure-11.2

12. Remove the freezer door bottom bushing and bottom stopper and then insert them the left side. (Fig-12)

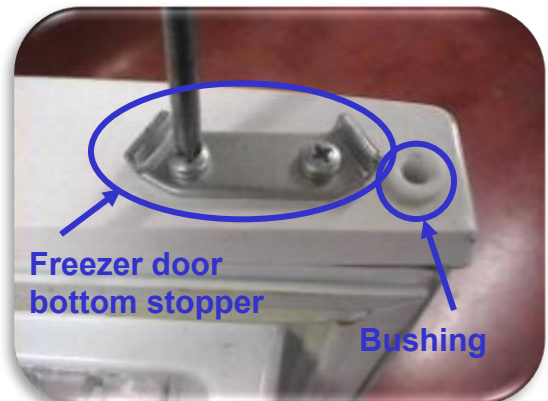


Figure-12

13. Remove the freezer door right catcher (Fig-13.1) and assemble the left catcher to the left. (Fig-13.2)
(You can find the left door catcher in the user manual bag)



Figure-13.1



Figure-13.2

14. Remove the socket cover-left of the freezer door (Fig-14.1) and assemble the socket cover-right to the right. (Fig-14.2) (You can find the right socket cover in the user manual bag)



Figure-14.1



Figure-14.2

15. Assemble the freezer door. Turn the middle hinge by 180°. Fix the middle hinge by tightening the screws. (Fig-15.1) Assemble the refrigerator door. (Fig-15.2)



Figure-15.1



Figure-15.2

16. Remove the socket tape (Fig-16.1) and stick it on the right side. (Fig-16.2)



Figure-16.1



Figure-16.1

17- Unscrew the screw fixing the top hinge pin. Then fix left top hinge pin to left side of the top hinge. (Fig-17)
(You can find the left top hinge pin in the user manual bag)



Figure-17

18- Connect the display connector and screw the left top hinge. (Fig-18.1) and screw the hinge cover. (Fig-18.2)



Figure-18.1



Figure-18.1

VESTEL WHITE GOODS	NF COMBI 3663-ELECTRONIC-ICE	CUSTOMER SUPPORT
	CHANGING THE DOORWAY DIRECTION	

Note-1 : Check the display after door reversing. Check the connections if display not working.

Note-2 : Check the door switches after door reversing. Adjust the doors if they are not working.



Replacement of Head Panel Group and Main PCB

1- Remove the head panel right and left caps. (Fig-1.1 / Fig-1.2)



Figure-1.1



Figure-1.2

2- Unscrew the screws fixing the head panel. (Fig-2.1 / Fig-2.2)

Use an appropriate screw driver head (torx)



Figure-2.1



Figure-2.2

3- Remove the head panel. (Fig-3.1 / Fig-3.2) *Make sure that the door is open 90°*



Figure-3.1



Figure-3.2

4- Disconnect all socket connections. (Fig-4)



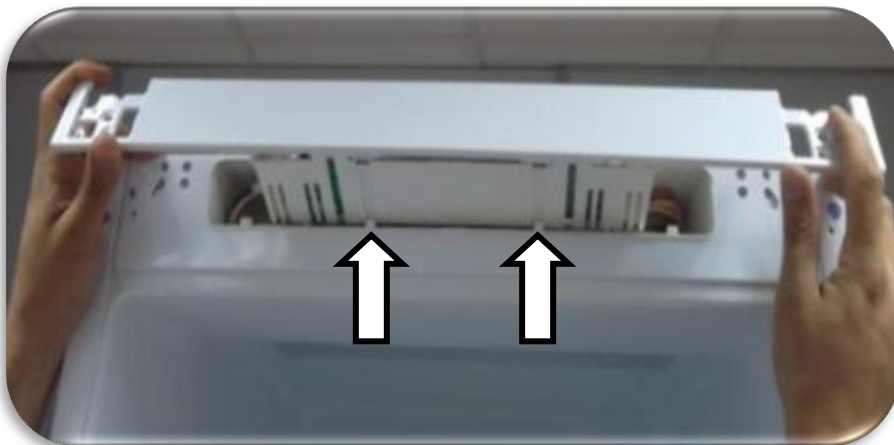
Figure-4

5- Remove the main PCB box (Fig-5) and take out the main PCB



Figure-5

6- After changing the main PCB insert the new one into the main PCB box and make the connections then mount them to the head panel. Mount the head panel to the panel housing.



VESTEL WHITE GOODS	NF COMBI 3663-ELECTRONIC-ICE	CUSTOMER SUPPORT
	Disassembly and Assembly Instructions	

Replacement of Refrigerator Upper Multiflow & Ref. sensor

1- First remove the glass shelves and bottle holder, then remove refrigerator multi-flow caps (Fig-1.1) and unscrew the screws. (Fig-1.2)

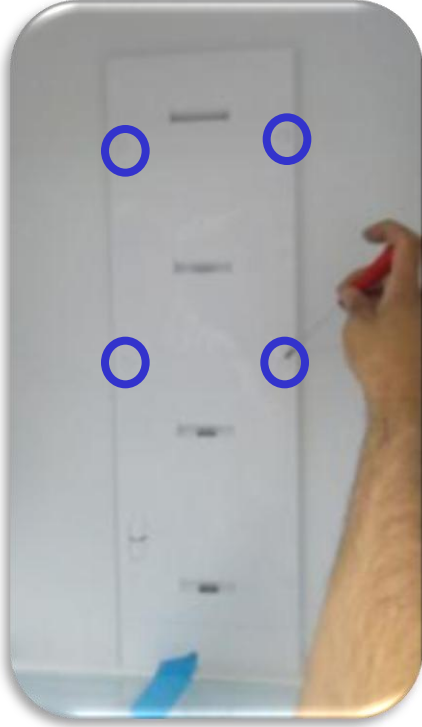


Figure-1.1



Figure-1.2

2- Then pull multiflow cover slightly from the right side. (Fig-3) Take out the Ref. sensor from the holders at the cover. (Fig-4)



Figure-2.1



Figure-2.2

3- Pull multiflow styrofoam slightly from the left side. (Fig-3.1) Take out the putty from the socket housing. (Fig-3.2)



Figure-3.1



Figure-3.2

Note: Keep putty for re-sealing the connectors after replacement.

4- Take out the sockets and replace the ref. sensor & Multiflow group. (Fig-4.1 / Fig-4.2)



Figure-4.1



Figure-4.2

5- Reseal the putty and place the styrofoam into its place, also place the ref. sensor to its holder at cover and close the cover. Then fix the screws and place the caps.

VESTEL WHITE GOODS	NF COMBI 3663-ELECTRONIC-ICE	CUSTOMER SUPPORT
	Disassembly and Assembly Instructions	

Replacement of Refrigerator Bottom Multiflow (including the dumper motor)

1- First remove the crispers, crisper shelf, chiller cover and chiller. (Fig-1)



Figure-1.1



Figure-1.2



Figure-1.3



Figure-1.4

VESTEL WHITE GOODS	NF COMBI 3663-ELECTRONIC-ICE	CUSTOMER SUPPORT
	Disassembly and Assembly Instructions	

2- Remove PC bottom multiflow caps (4) and unscrew the screws(5). (Fig-2.1 / Fig-2.2)

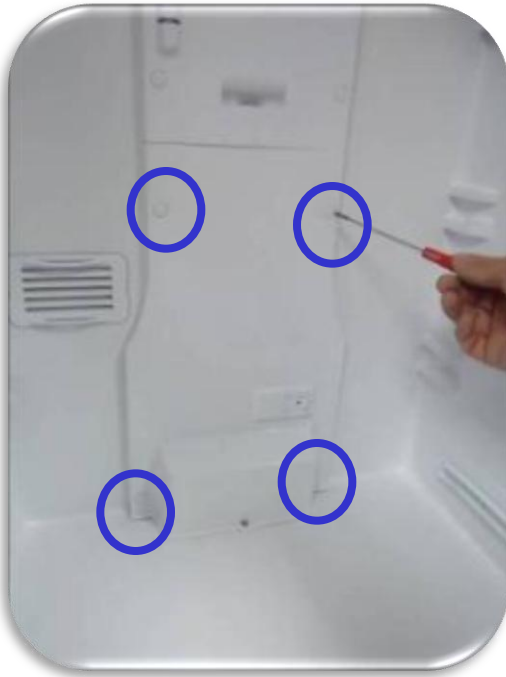


Figure-2.1



Figure-2.2

3- Pull multiflow bottom group slightly from the left side. (Fig-3)

4- Take out the putty from the connector housing and remove the resistance socket and dumper socket. Replace the sensor & Multiflow group. (Fig-4)

Note: Keep sealing material for re-sealing the connectors after replacement.



Figure-3



Figure-5

5- Reseal the putty and place the multiflow group into its place, Then fix the screws and place the caps.

Replacement of Freezer Multiflow Cover

1- Remove caps and unscrew the 4 screws shown at the picture. (Fig-1)



Figure-1

2- Then pull multiflow cover slightly from the bottom. (In case of icing between cover and evap, do not pull the cover with full force, slightly shake the cover to brake the icing then pull.) (Fig-2)



Figure-2

3- After pulling the cover, flip it to the right side of the cabinet. (Fig-3)



Figure-3

4- Take out the damper motor cables from the hook. (Fig-4)



Figure-4

VESTEL WHITE GOODS	NF COMBI 3663-ELECTRONIC-ICE	CUSTOMER SUPPORT
	Disassembly and Assembly Instructions	

5- Remove the sealing material (putty). (Fig-5)

Note: Keep sealing material for re-sealing the connectors after replacement.



Figure-5

6- Disconnect the damper motor connector from housing and remove the multiflow cover. (Fig-6 / Fig-7)

Note: Damper motor is assembled in the multiflow cover.

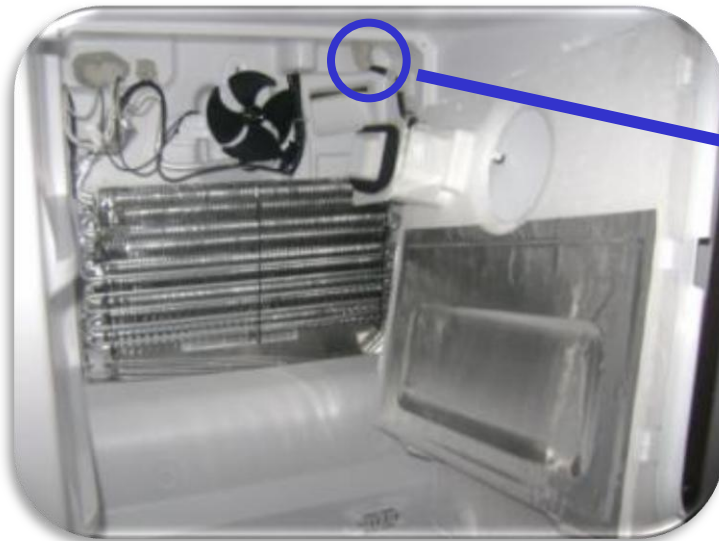


Figure-6



Figure-7

7- Attach the damper motor cables to the hook and make its connection. (Fig-8)



Figure-8

8- Reseal the connector with the sealing material (putty). (Fig-9)



Figure-9

9- Then push multiflow cover slightly to fit its place. (Fig-10)



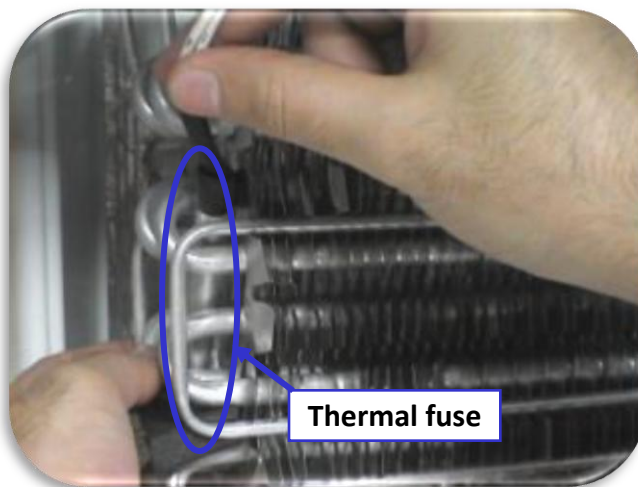
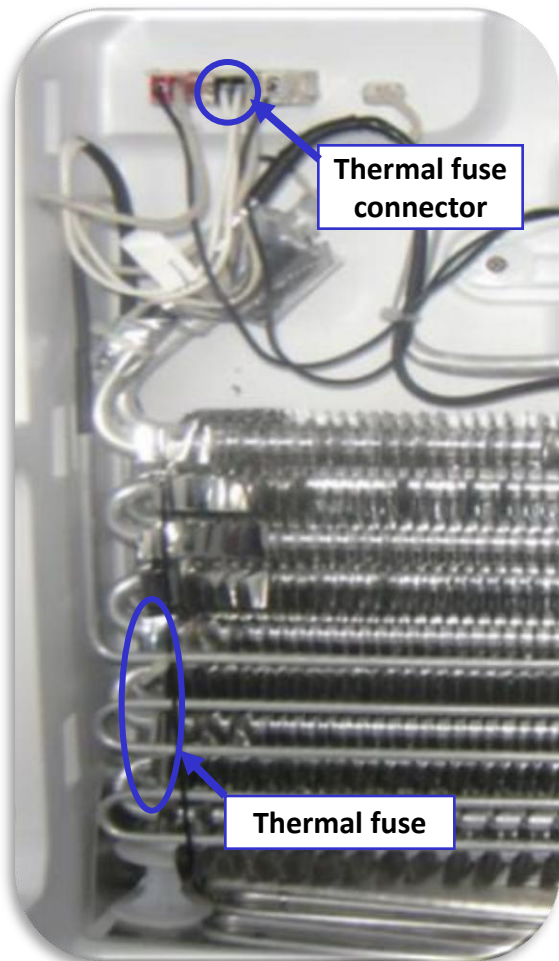
Figure-10

10- Screw and place the caps. (Fig-11)



Figure-11

Replacement of Thermal Fuse Assy.

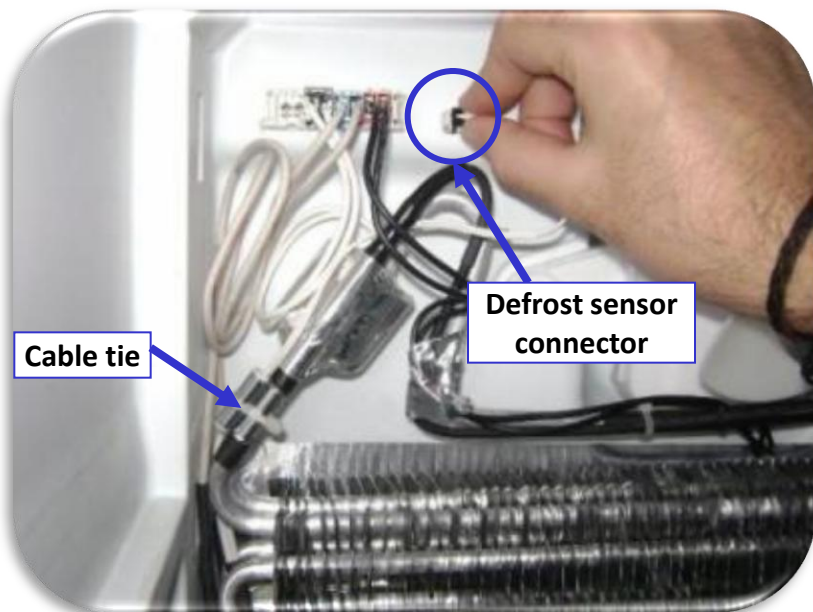


Disconnect thermal fuse connector.
(black connector)
Remove the thermal fuse by pulling it.
(mounted on the left side of the evaporator)
Take out the thermal fuse.

Note:

Be sure to replace both thermal fuse and defrost sensor ,in case that thermal fuse is blown.

Replacement of Defrost sensor



Cut the cable tie.
Disconnect to defrost sensor connector.
You can take out the defrost sensor
by removing the aluminum tape on it.

Replacement of Freezer Sensor

Remove the freezer sensor cover by pulling forward and disconnect sensor connector.



Replacement of ATC (At the top of the cabinet)

Remove the ambient sensor cover by pulling forward and disconnect sensor connector.



Replacement the ice cube tray holders

1- Remove the ice cube trays. (Fig-1)



Figure-1

2- Unscrew the 4 screws fixing the holders. (Fig-2)



Figure-2

3- Take out the holders by pulling downwards. (Fig-3)



Figure-3

1- First ,stick a tape on the corner of switch to prevent any scratches. (Fig-1)

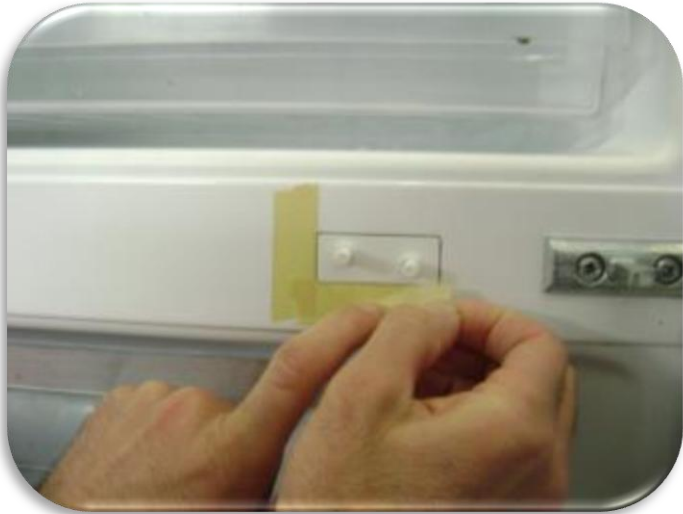


Figure-1

2- Take out the switch using a sharp/thin tipped tool. (Fig-2) Try to stretch it from one side, then remove it with your hand by pulling forward.



Figure-2

3- Disconnect the connector and replace the switch (Fig-3)



Figure-3

4- Cable colors and numbers must match at switch replacement. (Fig-4)



Figure-4

Replacement of Door Switch

1. Stick a tape to protect the body plastic. Flex it with the help of a tool like a slotted screwdriver. (Fig-1)



Figure-1

2. Also flex the top-side of the switch and then displace by pulling. (Fig-2)



Figure-2

3. Put the switch connector cable in the housing. First place the top-side of the switch and then push the bottom side.(Fig-3.1/Fig-3.2)



Figure-3.1



Figure-3.2

4. After the switch is placed, complete the assembly by pushing. (Fig-4)



Figure-4.1



Figure-4.2